

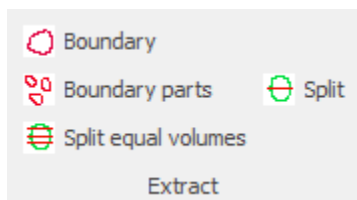
# SpatialXL 12.4.0.0 Release Notes

## What's new?

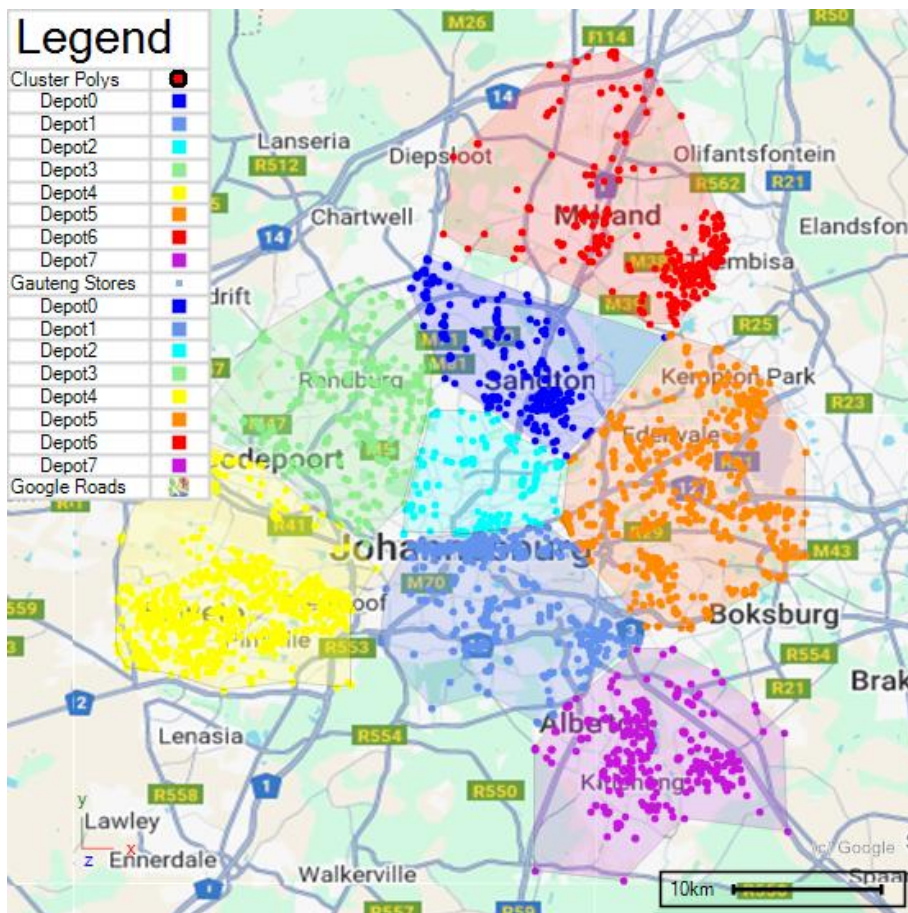
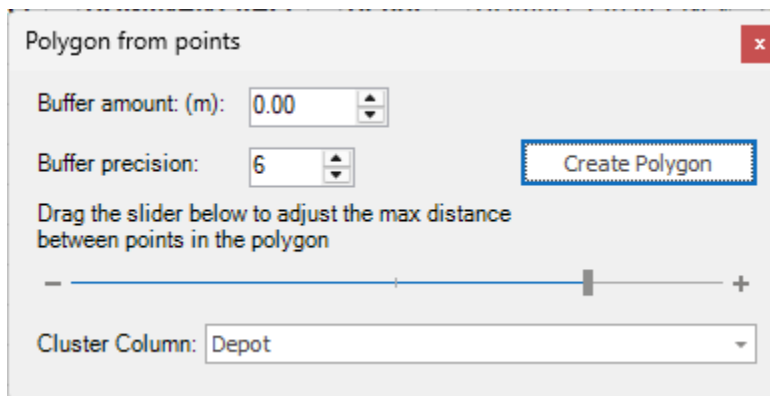
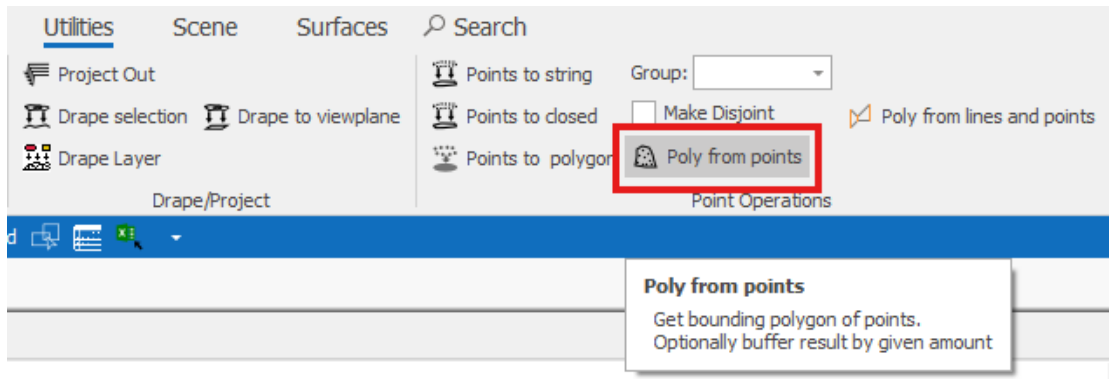
- ✓ Updated SpatialXL ribbon icons in Excel.
- ✓ Latest updated program components.
- ✓ Delete connected facets command in Surfaces tab.
- ✓ Copy connected facets command in Surfaces tab.



- ✓ New boundary extraction and surface splitting tools in the Surfaces tab.



- ✓ Handle new ModelMaker BOT file format.
- ✓ 'Poly from points' tool in Utilities tab can now generate polygons from a whole set of points based on their clusters thus creating cluster polygons.



- ✓ **Advanced Surface Boolean Operations:** We've added powerful, high-precision Boolean tools for surfaces. You can now perform accurate **subtractions, intersections, and combinations** between surfaces with improved reliability and clean results—making complex surface modeling faster and more precise than ever.
- ✓ Global bookmarks are now saved.
- ✓ Inverted surfaces can be identified by negative volume.

## Fixed

- ✓ Voronoi on selected items fix.
- ✓ Area, Length and Volume values fixed in Selected Items grid.
- ✓ Speeded up loading of geometry properties from Selected Items list.
- ✓ Fixed issue where dock layout is not saved
- ✓ Fixed image flipping when using dynamic load.
- ✓ Las/z file load fix.
- ✓ Fixed error on saving as DGN/DWG/DXF file.
- ✓ Error on Show Floating fixed.
- ✓ Fix on slitting polygons with the Trim tool.
- ✓ Fix shapefile saving when field sizes are too big.
- ✓ Fixed field choosing when saving to database.
- ✓ Fix on Selected Items update on deleting elements and refreshing layers.
- ✓ Fix ECW file loading issue.

- ✓ Fix median calculation in Statistics in Layer Data grid.
- ✓ Fixed settings of coordinate grids on views.

## Support

---



T: +27871354351

[support@primethought.biz](mailto:support@primethought.biz) - [primethought.biz](http://primethought.biz)

Kyalami Estate, Midrand, Johannesburg,  
1684, South Africa

